

Port Orford *Today!*

Port Orford's Most Popular Newspaper!

Vol. 15 Number 03

Thursday, January 15, 2004

© 2004 by Downtown Fun Zone, Inc.

Downtown Fun Zone, Inc.

Evan & Valerie Kramer, Owners

832 Highway 101, P.O. Box 49

Port Orford, OR 97465

(541) 332-6565 (Voice or FAX)

Valerie: valerie@mydfz.com

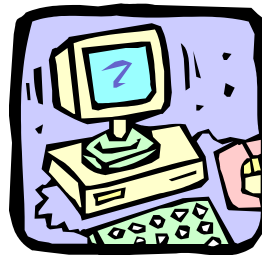
Evan: evan@mydfz.com

Brenda: .. dellama@harborside.com

Nancy: ... nancyab@harborside.com

Web Site: <http://www.mydfz.com>

FREE



Internet access slow?

**Sign up now for
high-speed access!**

Garrison Lake Emptied

By Evan Kramer



The City of Port Orford for the second time in a month opened Garrison Lake to lower the lake level. The City hired a private contractor and on Friday, January 9, an opening was dredged

straight out at Agate Beach. In short time 10,000,000 gallons of water rushed out to sea. The lake took on the appearance of a salt marsh. Emotions ran high among some city and county residents who didn't like what their lake looked like on Saturday morning. At the Twelfth Street Boat Ramp and fishing dock there was no water under them and the sewer outfall pipe (anchored with concrete collars) was completely exposed. Oregon State Parks manager for the Cape Blanco Unit Frank Eckley said state parks have issued the city an emergency permit to open the lake. Some time last year the figure of 14 feet was raised as far as when to open the lake. However the lake was at 16 feet when it was opened on Friday. The emergency permit is good through February 8.

Meanwhile an agency meeting was held at Port Orford City Hall on Tuesday, January 6, three days before the lake

opening. It was attended by Representative Wayne Krieger, Commissioner Lucie La Bonte, Don Ivey with the Coquille Indian Tribe, Michael Murphy – Curry County Emergency Services Coordinator, Dave Pace and Mayor Gary Doran from the City of Port Orford, Frank Eckley, two representatives from the Oregon Department of Fish and Wildlife, and Pete Barrel – Resource Manager for Oregon State Parks. One idea discussed was of running a meandering creek through Agate Beach State Park, which would drain the lake to the south through the park and then reconnect with what is left of the former lake outlet. The group did not urge the city to hold off opening the lake.

The bluffs overlooking the ocean at Agate Beach State Park continue to erode. Because of the amount of erosion and sharp drop offs created by the opening of the lake that area of the park is cordoned off from public use because of the danger. By Tuesday morning of this week the lake has risen considerably though it couldn't be measured at the Twelfth Street boat ramp because that measuring device begins at 12 feet and there was no water at that point.

On Monday night the city council held a special meeting to hear presentations on both the Garrison Lake Rehabilitation

study and the Water System Master Plan Update. It was posted in both newspapers that the Lake Rehabilitation Study portion of the meeting would begin at 6:45pm but because city engineer Steve Donovan was late to the meeting the Lake Study was begun at 6:00pm. Several people missed part of this part of the meeting because of the switch.

The Lake Rehabilitation Study was done by EGR and Associates, engineers and geologists and presented by Steve Newcomb.

Newcomb's solution for the lake flooding and the numerous breechings was reconstructing the dune at Agate Beach between the two existing dunes and reestablish the old channel. He said it had been there for 150 years. He described the channel as 27 feet wide with a four foot deep channel. He said the reconstructed sand dune would be 9.5 meters high and 10 meters wide. 125,000 cubic yards of sand would be needed to complete this project and Newcomb said 109,000 cubic yards of sand was available in the old channel. The dune will be held together with something called a geo-tube.

Newcomb was less than enthusiastic about an outlet channel or a culvert

Continued Inside Back Cover

R. AuFranc
LAWYER
"COMMON SENSE ADVICE &
LEGAL SERVICES"
WILLS
TRUSTS
PROBATES
BUSINESS
REAL ESTATE
HWY 101 @ 9th St.
332-2102
also inactive CPA



SOUTHPORT
FOREST PRODUCTS

Buying delivered conifer
small saw log sort
& conifer pulp logs

Forrest Flowers
Log Buyer
541-266-0903
541-266-0824 fax
Cel. 541-297-5482
Home 541-332-4385



Excel Accounting Services
Lyndell Hauschildt, L.T.C.
94120 Moore St.
P.O. Box 123
Gold Beach, OR 97444
(541) 247-6560
Fax (541) 247-3442

Tide Predictions For Port Orford - 42° 44.735 N 124° 30.832 W

Produced by "Tides & Currents for Windows" version 2.0 by Nautical Software (503) 579-1414

Date	Time Tide	Time Tide	Time Tide	Time Tide	Time Tide	Time Tide	Sun		Moon		Rise	Set	Rise	Set	Phase	
							Rise	Set	Rise	Set						
Thu Jan 15, 2004	5:18a 7.6	12:11p 1.9	6:06p 5.1	11:21p 2.8	7:44a	5:10p	1:54a	12:10p								
Fri Jan 16, 2004	6:05a 7.9	1:21p 1.0	7:42p 5.1		7:43a	5:11p	3:08a	12:39p								
Sat Jan 17, 2004	12:22a 3.5	6:57a 8.2	2:24p 0.1	9:07p 5.4	7:43a	5:12p	4:23a	1:15p								
Sun Jan 18, 2004	1:31a 3.9	7:53a 8.5	3:21p -0.7	10:13p 5.9	7:42a	5:13p	5:36a	2:00p								
Mon Jan 19, 2004	2:40a 4.1	8:49a 8.8	4:14p -1.3	11:06p 6.3	7:42a	5:15p	6:44a	2:57p								
Tue Jan 20, 2004	3:43a 4.0	9:45a 9.0	5:03p -1.7	11:53p 6.6	7:41a	5:16p	7:41a	4:07p								
Wed Jan 21, 2004	4:41a 3.8	10:38a 9.1	5:50p -1.8		7:40a	5:17p	8:27a	5:20p	NM							
Thu Jan 22, 2004	12:36a 6.9	5:35a 3.5	11:30a 9.0	6:34p -1.6	7:40a	5:18p	9:03a	6:34p								

Letter to the Editor,

It's tempting to put people into two groups, as "There are two kinds of people: those who like artichokes and those who don't." We now have two kinds of people in Oregon: those who are willing to pay their taxes and a small amount more to help our troubled state and those who aren't.

1. Those planning to vote YES on Measure 30 know that budgets for schools, health care, law enforcement and other vital services have already been decreased and further cuts would be devastating. 2. They know the measure is supported by a large coalition of concerned people and groups operating in the public interest. 3. They know the measure will help the employment situation, not hinder it.

4. They know our elected legislators passed HB 2152 as the best solution to Oregon's fiscal problems at this time. 5.

They are willing to share the burden.

1. Those who oppose Measure 30 seem to believe that money is available somewhere other than taxes. 2. Some of them seem to believe schools and other government-supported services can function well with less money and fewer employees. 3. They think it is all right for the state to borrow money and spend, thus endangering Oregon's future.
4. The NO folks seem to think it is unnecessary to adequately educate our leaders and workforce for tomorrow. 5. They don't trust our state leaders or anyone else. Two kinds of Oregonians. Which kind of person are you?

Check these websites: www.ouregoncoalition.com, www.yeson30.com, vtrvww.lwvcurry.org

Shirley Nelson
Port Orford

[Editor's Response: Sorry Shirley. I'm a "NO" kind of person when it comes to new taxes. Last year taxes took over 40% of our income. If they can't do the job with that big a bite, then they ought to fold the tent and let someone else do it that can! 1. I don't think money is necessarily available elsewhere - I think they already get more than enough. 2) I think many government functions should be eliminated completely and left to the private sector. That will leave ample funding for necessary services. 3) I'm not advocating state borrowing - as I said, I think they already have more money than they need. 4. Education is a reasonable job for the government but in general they do a mediocre job of it and seem to have little interest in cost saving ideas. Maybe they should get out of the business. You're quite right on one thing though... I DON'T trust our state leaders or anyone else that feels entitled to my money! So far, their track record supports my distrust. - Valerie Kramer]

*Meet your friends for Breakfast, Lunch
or Dinner at the*

Wheelhouse Restaurant

Open daily 7:00am - 9:00pm

Our speciality - FRESH FISH

Hwy 101, Battle Rock Park, Port Orford, OR

Senior News
By Mary Yoder

Yes there is a volunteer of the month of January. Who? A very nice one Dolores Care. She does blood pressure every Tuesday, works in the office and helps wherever it's needed. Good choice. Now it's January. So here are the January birthdays. Judy McSharry 1-2, Mary Yoder 1-7, Carmen Mollers 1-8, Bill Dooley 1-9, Phillip Heater 1-9, Irene McGill 1-9, Mike Buchholz 1-10, Connie Heida 1-18, Rosie Hajek 1-19, Norman Rice 1-24, John Suchy 1-26, Greta Hollowell 1-26, Brenda Foster 1-28, Dot Mathews 1-30, Tina Buchholz 1-30. Happy birthday to all of you from all of us.

January 8 was Rotary luncheon. Volunteers working were head cook Nancy Dowdy, others working Jackie Sellon, Ed Dowdy, Owen Miller – setting up the dining room Jackie Sellon. A very nice luncheon all enjoyed.

January 11 was breakfast – volunteers working were Ed Dowdy head cook – others working Jackie Sellon, Ron Panozzo, Jane Wight, Bert Wight, Tina Buchholz, Owen Miller, Al Granados and

Elaine Pendleton. Everyone did their part. At the moneybox Nancy Dowdy. Hope I've not missed anyone or anything. Oh yes we now have 187 members in our family. How about 190 by January 25?

Just a reminder. The bus is available five times a week now – Monday, Tuesday, Wednesday, Thursday and Friday from 9:30am to 1:30pm. After 1:30pm for going to the clinic. Just call Isaac at 332-5771.

I don't like putting this notice in but it has to be done. The birthday luncheon is no longer as of January. It has been taken off the calendar.

Blood pressure every Tuesday morning.

Hearing aid January 14 from 9:30am to noon.

TOPS on Mondays at 9:30am and 6:00pm.

Walking group Tuesday, Wednesday and Thursday at 8:30am.

Osteoporosis exercise Monday and Wednesday at 5:30pm.

Art and quilting Wednesday 9:30am to 3:00pm.

Howard S. Lichtig
Attorney at Law

*Board Certified—Consumer
Bankruptcy Law—American
Board of Certification
Bankruptcy
Injuries / Accidents
Criminal Defense
Probate / Conservators*

332 - 6060

Hwy 101 (264A W. 6th St.) Port Orford, OR

Tai Chi Fridays at 8:30am.

Rotary luncheon Thursdays at noon.

Oh I wish I had a rainbow

I'm waiting for a sign

To brighten things around me

Leave the shadows all behind

Then I put aside the wishing

And the waiting time is gone

Now it's time to make things brighten

With some rainbows of my own.

Something's Gotta Give

Something's Gotta Give is the movie playing at the Savoy Theater starting on Friday, January 16. This movie is about a seasoned New York music mogul (Jack Nickolson) who falls for the divorced mother (Diane Keaton) of his much younger girlfriend (Amanda Peet) when unexpected health problems strand him at her beach house. The movie is rated PG-13.

Lodging Tax Workshop

The Common Council of the City of Port Orford invites the public to a Workshop on the Transient Lodging Tax Ordinance at 6:00 p.m., Tuesday, January 20, 2004, prior to the Regular Council Meeting, at City Hall Gable Chambers, 555 W. 20th, Port Orford, Oregon

The workshop is being held to review the duties of the TLT Committee, and to discuss the scope of the tax base.

Paula's Bistro



Open for dinner
at 5pm Tuesday through Saturday
Closed Sundays & Mondays

For reservations call...

(541) 332-9378

236 Hwy 101, Port Orford

Democrat Annual Dinner

Keynote speaker for the Curry County Democratic Central Committee Annual Dinner on Saturday, February 7th is Secretary of State, Bill Bradbury.

Bradbury, the second-highest ranking constitutional officer of the State of Oregon has spoken to citizens of Curry County from his office in Salem... "The citizens of Curry County will play a pivotal role in the next election, not by their numbers but by their spirit. Curry County embodies the difficulties faced by rural communities across Oregon and across America: high unemployment, a struggling economy, scaled back services, and far too many citizens without health coverage. But Curry County also embodies the pride we take in our state and our nation, and our will to take it back. By coming together to support grassroots activism, Curry County is showing that it is indeed a part of the solution."

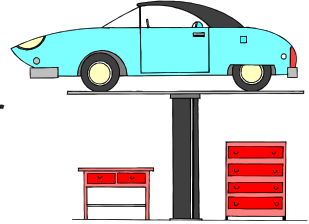
Whether you are a long time Democrat, a new Democrat, or an Independent who cares about our future, you are invited to join with a newly invigorated Democratic Central Committee at an upbeat evening

Port Orford Garage

Complete Service Work

- Lube Oil Filter
- Fluid levels checked
- New Tires & Tire Repair
- Other light repairs

332-0494



with like-minded, like-hearted people. The event titled "Brother, Can you Spare a Dime," starts with no-host cocktails at the "Speakeasy" at 6:00 PM and is followed by dinner and the Secretary of State's speech at the Docia Sweet Hall at the Gold Beach Fairgrounds . A silent auction promises many interesting items on which to bid.

Tickets are \$20 per person and can be purchased in Brookings from Pat Sherman at 541-412-8840, in Gold Beach from Jack Churchill at 541-247-2028 and in North Curry County from Flo Lichtig at 541-348-2208 or 541-332-6060. All proceeds go to CCDCC . For more information please call Nella Reed Abbott at 541-332-9110.

Letter to the Editor,

All of my life I have dreamed of living on a beautiful lakeshore or riverbank where I could enjoy boating, fishing and other recreational activities such as just watching the beautiful wildlife and the wind and rains on the surface of the lake. Finally after 78 years my dream was fulfilled when I bought a little place on the shore of beautiful Garrison Lake and we moved from Bandon to Port Orford. For one summer we were able to enjoy this beautiful lake. I purchased a small boat and was able to find much fulfillment of my lifelong dreams.

Then on my second summer, because of the incompetency of a few people I could no longer enjoy these things because the lake had been drained. The third summer came around and the same lousy thing. My little boat has been high and dry for two years now. Now in 2004 the outlook seems to be the same only worse. We now have a salt marsh slough where beautiful Garrison Lake used to be. Not only have we been robbed of the wonderful recreational opportunities but our property values have plunged from lake-shore property to something else. AND if it is bad for us humans think of what the poor wildlife is facing, destruction of their natural habitat and a totally new set of surroundings that they must learn to cope with, of course many will not learn but will die in the attempt.

Sam Bryson

"JAVA CASA"

**OPEN 7 to 11 AM
Monday thru Saturday**

*** Fresh hot coffee!**

*** Fresh Baked Pastries**

(Next to Paula's Bistro)



Eye Center of Port Orford

Professional & Comprehensive
Vision Care
Eye Disease and Surgical Management

929 Oregon Street
(541) 332-0899

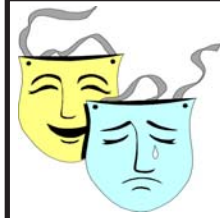
Accepting New Patients
OHP Patients Welcome

Walk to Paradise

Jim Coffee, leader of the first Sole Pursuits' Walk to Paradise adventure, will present an electronic slideshow highlighting last fall's 12-mile trek. The presentation is set for 7:30 a.m., Wednesday, Jan. 21, in the Curry General Hospital Curry Café.

The public is invited to view the show and ask questions about the next Walk to Paradise planned this spring. The Walk to Paradise event is included among the monthly, guided fitness hikes offered by Sole Pursuits, an incentive walking program sponsored by Curry General Hospital.

Last October, about two dozen hikers walked the Upper Rogue River Trail from Illahe to Paradise Bar Lodge in the wild and scenic Rogue River corridor. Along the way, hikers visited historic landmarks and saw bear, pileated wood-



Savoy Theatre

811 Hwy 101, Port Orford, OR
541-332-3105 voice, 332-8105 FAX
savoy@harborside.com

SOMETHING'S GOTTA GIVE

Rated PG-13 • Starring Jack Nicholson, Diane Keaton

FRIDAY 7 pm

SAT. & SUN. 4 & 7 pm

MON – THURS 7 pm

peckers and river otters. Thanks to Court Boice, owner of the lodge, the hospital was able to offer the trip at a reduced rate to raise funds for its forthcoming cardiac rehabilitation center. Boice shuttled the hikers back to the trailhead in his jetboat.

Complimentary coffee and tea will be available during the presentation. Full no-host breakfasts can be ordered from the café.

The program is presented as part of the public breakfast program hosted by the hospital and the Gold Beach Kiwanis Club on the third Wednesday of every month.

For more information, phone the Curry General Hospital community relations department: (541) 247-3187.

EMT Classes

EMT (emergency medical technician) classes are being taught in Port Orford with ten students enrolled from Port Orford, Sixes, and the Langlois area. Some are from our local fire departments. Classes will end in April with students certified by sometime in June. EMT intermediate classes also are being taught in Port Orford. This class will also end in April.

These classes would not have been possible without the efforts of Robbie Kirsch, Director of Public Safety & Training at SWOCC. She has put in time and energy far beyond the call of duty to make sure these classes became available and most importantly that they were available here in Port Orford. Also with her help and expertise, Port Orford Ambulance was given grant monies to offset tuition, book and testing fees and some of the instructors' salaries.

As a result of Robbie's efforts and SWOCC support, Port Orford Community Ambulance will soon have more EMT basics and intermediates.

The Cat's Meow

Vacation Cottage

Quaint, comfortable, affordable

503 Jackson St., 80 feet to beach access

Great for families, couples, singles

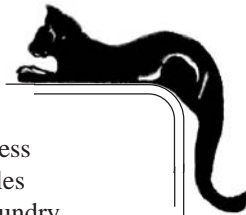
2 Bedrooms, full kitchen, laundry

Winter Rates Now In Effect!

All reservations made in advance. Please call toll free:

866 - 503-5003

History: Sears kit house, circa 1910





Sea Breeze
Florist

**Bread feeds the body.
Flowers feed the soul.**

World Wide Wire Service

(541) 332-0445 Shop 311 6th St.
888-484-2234 (toll free) Port Orford

High Speed Internet

A lot of people have asked about the availability of high speed Internet and I think we're finally in striking range of getting something done! Verizon refuses to lease any more connections such as were used to provide SDSL to the library so the current plan is to eliminate them and use a wireless system.

Carroll's Web (formerly Harborside) has provided me with a set of contracts for high-speed access. If we can get 12-15 people to sign them, then they will see about putting up a wireless transmitter at the Fun Zone and providing high-speed service. To use this, you will need an antenna at your location that will have a clear line of sight to the transmitting antenna, which will be about 20-25' above the Fun Zone roofline.

There are two different contracts, one for residential users and another for commercial users. Each type of user has a choice of a "Basic" or "Super" account. The Basic account provides speeds of 768k / 256k (download / upload) and the Super account has 1.0Mbps / 256k.

More good news: The rates are more reasonable than I was expecting. There is a \$199.99 installation fee. Residential customers will pay \$39.99 / 49.99 (Basic / Super) per month, while commercial users will pay \$20 more. The monthly rate covers up to 5Gb of data transfer for residential users and up to 10Gb for

Limited Only By Imagination (And Yard Size.) *"For all your home and construction needs"*

Bandon Supply

8 a.m. - 5:30 p.m. Mon. • Fri.
9 a.m. - 4 p.m. Sat.

**1120 Fillmore
Entrance at
11th & Elmira
347-2662**

A deck that won't rot, crack or splinter.
Trex decking. It's what dreams are made of.

American with Disabilities Act (ADA) approved. **Trex®**
The DECK of a lifetime

commercial users. Additional data transfer in a month (if any) will be \$10.00/Gb for all users. A 12-month commitment is required.

Copies of the contract are available to review and sign at the Downtown Fun Zone, Inc.

Call For Volunteers

The Parks Commission received comment objecting to the removal of the miniature golf course, where it proposes to construct a large picnic area on the east side of Buffington Park. As an alternative, the Commission is soliciting volunteers to rebuild the existing miniature golf course and maintain it periodically. The Commission also needs help with a clean-up of that area and the existing picnic area on the west side. The Commission could then consider improving the existing picnic area to accommodate medium size groups. Comments regarding the relative merits of constructing the previously proposed large picnic area and improving the existing picnic area are welcome. If the Parks Commission does not receive volunteer help with refurbishing and maintaining the miniature golf course, it will proceed with plans for its removal.

City of Port Orford residents and others interested in volunteering their services can contact: Parks Commission, City of Port Orford, P.O. Box 310, Port Orford, OR 97465 or phone City Hall at 332

3681. The next meeting of the Parks Commission is scheduled for Tuesday, February 3, 2004 at 7 PM in the Council Chambers.

Two Weeks Left!

Take a \$1 chance to win the beautiful Peggy O'Neal print titled, "The Gathering Place," that benefits the Run to the Rogue and the Honor Ceremony, both hosted by the Port Orford Arts Council. Tickets are available at the Downtown Fun Zone and Chetco Federal. The drawing will be held at the Arts Council Open House on Saturday, January 24 at 'Neath the Wind Studio on Hwy. 101.

"You've got two weeks left to enter the drawing to win a print from nationally acclaimed artist Peggy O'Neal," said Stacy Romele, Arts Council president. "It's a beautiful painting framed by Carol Malley at Uptown Frames." "The Gathering Place" is one of a suite of paintings hanging in the Mill Hotel Lobby in North Bend.

O'Neal, who has lived on the Siletz Indian Reservation, has collaborated with the Siletz and other tribes to produce historical paintings that provide images of native traditions and cultural history. O'Neal was one of the collaborators on the interpretive center at Battle Rock outside the Port Orford Visitor's Center. Her work can be seen at her gallery, Albino Crow, in North Bend.

Port & Starboard Restaurant and Lounge

Featuring Daily Lunch and Dinner Specials

and

Fresh Fish from our Local Fishermen



Nightly Specials

Thursday: All you can eat Spaghetti

Friday: Seasoned and Slow Roasted

Prime Rib

Saturday: Scrumptious Seafood Specials

Don't Forget about our

Famous Fresh Qualman Oysters

Clam Chowder-Soups-Sauces-Pies-Bread

ALL MADE FRESH DAILY

Fresh Salads made with Spinach and Leaf
Lettuce

with Fresh Greens from *Veggiez*

**OPEN FOR BREAKFAST,
LUNCH AND DINNER
SEVEN DAYS A WEEK**

Restaurant Hours:

Mon.-Sat. 7:00 am to 9:00 pm

Sunday 9:00 am to 9:00 pm

Lounge Hours: 7:00 am to 2:00

We do **ORDERS TO GO**

Phone: 332-4515

Come and see what the Port &
Starboard Restaurant and Lounge
has to offer. We Hope to see You
soon!

Arts Council Open House by Dana Amarisa

The Port Orford Arts Council is throwing an Open House Party on Saturday, January 24, from 1-4pm at their new headquarters in 'Neath the Wind Studio on Hwy. 101, next door to Sterling (Klammath) Bank.

"Everyone is invited to come see the Arts Council's new home, have some snacks, and check out the events we have planned for this year," said Stacy Romele, Arts Council president. "We'll be having a raffle, and giving out chairs to artists for our Musical Chairs fundraiser this spring. Come on over!"

The Musical Chairs event to be held April 3rd is an evening of Broadway show tunes sung by local Port Orford men. "We'd like to call it a male review," Romele said, "but it's actually a G-Rated, song-fest of talented male singers from our community." The primary fund-raiser for the Arts Council's Summer Arts Program, the Musical Chairs event also is the culmination to a month-long silent auction of hand-painted chairs donated by local artists. "So come to our Open House, see some of the hand-painted

chairs that are already completed and pick up a chair to paint," Romele said.

For questions, call Stacy Romele at 332-1140 or check out the POAC web site at its new address: www.portorfordart.org

We may have incorporated but we still have the
SAME LOW PRICES!!

8x30 Binoculars with built-in digital camera. Take pictures of the birds or other animals you see! \$39.99

Uninterruptable Power Supplies
Protect your computer and the data on your hard disk when the power goes out. 650VA \$44.99

Powered Speakers: We have several kinds... A typical inexpensive set for \$4.99. With subwoofer \$9.99. Altec Lansing subwoofer to add to your existing speakers for top quality audio \$29.99

Battery-Free Flashlight \$16.99

Modems - from \$9.99!

SALE ON MAGIC CARDS

TWO WEEKS ONLY!

(Jan. 14 - Jan. 28)

All Magic The Gathering cards

25% off regular price!

All items limited to stock on hand.

Coming soon: more mice, keyboards modems, microphones, and a video capture device! Always something interesting at the Downtown Fun Zone.

Downtown Fun Zone, Inc.

832 Hwy 101, Port Orford • (541) 332-6565

HEARTH & HOME

Brick & Chimney, Inc.

(541) 348-2465

Nick & Colleen

Over 20 years experience

Licensed, Bonded & Insured

CCB # 94570



Chimney Sweeping • All Masonry
Chimney Building & Repair • Tuckpointing
Wood & Pellet Stove Installation

Residential and Commercial



CALL FOR A FREE ESTIMATE

QUALITY SERVICE

Port Bathrooms Open

The two bathrooms at the Port of Port Orford are back in working order as of Tuesday, January 6. They were both closed in December because of the failure of the sewer pump station. The City of Port Orford Public Works department has had the pump station repaired and the bathroom doors are now unlocked.

Service is.....

being dedicated to maximizing
the financial well-being
of our members.

*Become a member of Chetco Federal
Credit Union. The service is great—
you'll see for yourself.*



CFCU

Chetco Federal Credit Union

Everything we do,
we do for *you*

Port Orford Office 1000 Oregon Street, 97465 Phone: 332-3711

Port Gets New Tenant

The Port of Port Orford has a new tenant as of Monday, January 12. The Port Commission met on Friday, January 9, for two hours at the dock office and negotiated a lease with Oregon Bait Company (Rob and Cecil Ashdown) for one of the product hoists and 1425 feet of dock space surrounding it. Premium Pacific Seafood previously leased this product hoist.

At Friday's meeting the Commission considered several options including operating the hoist as a fishermen's hoist or leasing it to either Oregon Bait Company or Blaine Crab. The commission voted 5-0 to lease the hoist and space to Oregon Bait Company. Some of the conditions in the motion were unacceptable to Oregon Bait so on Monday the commission met at the dock office with a revised lease and both parties agreed to it.

The space and hoist were leased to Oregon Bait for \$480 a month for one year. They will be responsible for certifying the current hoist in place but they intend to install a new product hoist. Oregon Bait has agreed in their lease to lift prod-

uct during normal Port business hours (5:00am to 9:00pm) for a "reasonable fee from fishing vessels belonging to any fishermen requesting this service."

Chamber Elects Officers

The Chamber of Commerce of Port Orford and North Curry County held their first meeting of 2004 on Monday at Bartlett's Café and elected new officers.

The Chamber elected two new board members Judy Taylor and Jay Stoler in their December election. Because of the resignation of Kathleen Sandlin from the board, which was turned in at Monday's meeting, Grace Bonnell was appointed to fill the vacancy.

The board elected Grace Bonnell president, Jay Stoler vice president, Marilyn Oberbeck treasurer and Evan Kramer secretary. The board formed an Internet committee to work on gaining high speed Internet service to the Port Orford area. Committee members include Judy Taylor, Marilyn Oberbeck, Emily Francona, Rusty Gibson and Jay Stoler. They will report to the board on a monthly basis.

The next chamber meeting is on Monday, January 26, 8:00am, at the Wheel-

Family Hair Care

Open 9-5 Tues. - Sat.

Facial Waxing • Tanning Bed
Manicures, Pedicures,
& Nails



Walk-ins welcome,
Evenings by appt.

332-0504 or 332-5028

house Restaurant. All Chamber members are encouraged to attend this workshop session and talk about goals for this year.

Biscuit Fire Comments

Citizens interested in making comments on the Biscuit Fire Recovery Project Draft Environmental Impact Statement (DEIS) have until Tuesday, January 20, 2004 to submit their comments.

Comments are directed to Scott D. Conroy, Forest Supervisor, Rogue River-Siskiyou National Forest. His e-mail address is r6_biscuit@fs.fed.us. Faxed comments can be sent to (530) 493-1776 and written comments can be sent to Scott Conroy, Forest Supervisor, c/o ACT2 Enterprise Team, PO Box 377, Happy Camp, CA 96039-0377.

City Council Meets

The Port Orford City Council meets on Tuesday, January 20, 7:00pm, in the city hall council chambers. The council normally meets on Monday but City Hall is closed on January 19 in honor of the Dr. Martin Luther King Jr. holiday.

Port Commission Meets

The Port of Port Orford Commission meets on Tuesday, January 20, 7:00pm, at the **Port dock office**. Normally the commission holds their monthly meeting in the city council chambers but they will be occupied.

Currydale Farms



Real Estate
 currydale@harborside.com
 Sheepskin Specialties
 Langlois — 348-2500

Farm Mart
 farmstore@harborside.com
 Fencing • Feed
 Culvert • Gates

Animal Husbandry Supplies
 Across from Ocean Spray
347-4356
 www.currydale.com

**Bargain
 Of The Month**

True Value
 16pk
 AA
Batteries
\$3.⁹⁹

McNair True Value Hardware
 Help is just around the corner
 1935 N. Oregon St., Port Orford
 (541) 332-3371

Bartlett's Cafe

Thursday	Doughnuts
Friday	Raspberry Fritters
Monday	Raised Doughnuts
Tuesday	Buttermilk Bars
Wednesday	Apple Fritters

(Menu subject to change)
Open 7am to 3pm Every Day
 Located across Hwy 101 from
 The Downtown Fun Zone
 in Port Orford

Letter to the Editor,

Our sincere thanks go out to the many people in Port Orford who helped make our 5th Annual Free Children's Christmas Bazaar such a success.

Over 65 children came out on probably one of the worst days we've had in the last year, and picked out presents for their family. Over 475 presents were wrapped by volunteers. While there, children and parents were treated to a hot lunch with dessert. And from the sounds coming from the Fellowship Hall, they were having a great time.

Christmas had to be a happier time in the families of those 65 children. So, thank you all for your generous giving; of presents, time and energy in making this event such a great success. And thank you for providing those of us involved in helping the children, with the opportunity to share in the gift of joy of Christmas.

Sincerely,

Gail Conwell
 Women's Ministry
 Port Orford Christian Center

Wyden Town Hall Meeting

United States Senator Ron Wyden holds a town hall meeting in Port Orford on Saturday, January 17, from 10:00am to 11:30am in the city hall council chambers. Area residents will have the opportunity to ask questions of Wyden and share their views at the town hall meeting in Port Orford and later that day in Coos Bay at Coos Bay City Hall from 3:00 to 4:30pm.

Wyden, a Democrat, is Oregon's senior senator and is seeking reelection this year. He pledged to hold town hall meeting every Oregon county each year and has held to that promise.

Wilcox Named Fire Chief

The Port Orford Volunteer Fire Department elected Gayle Wilcox as fire chief at their last meeting. The Port Orford Rural Fire Board is expected to confirm the fire department vote when they meet on January 13. Wilcox replaces Randy Foster. Wilcox is a long time volunteer fire fighter and wildland fire fighter and is also an EMT with Port Orford Ambulance and is an excellent choice.

Langlois Lions News

The Langlois Lions will be hosting a Red Cross Blood Drive to be held on February 17 from 1:00 pm to 5:45 pm at the Port Orford Senior Center. Please call Jean 348-2202 or Jo-Ann 348-2576 to schedule an appointment.

The next Langlois Lions Bingo will be at the Langlois Lions Clubhouse on Floras Lake Loop Road South of Langlois at 6:30 pm on February 12. Come join in the fun and help us support our community.

Memorial Service Scheduled

Dorothea Wells Grogan, September 1, 1908 – December 10, 2003

A memorial service will be held for Dorothea Wells Grogan, 95, of Port Orford, on Sunday January 18 at 1:30 p.m. at St. Christopher's Episcopal Church on 9th Street. Father Cliff Goldman will officiate. Survivors include a daughter, Pat McArdle of Port Orford.

The family suggests memorial contributions be made to Curry County Hospice.

REAL ESTATE & RENTALS

FREE BROKER PRICE OPINION on your home or property. We sold many properties this past year and need more property to sell. Call Sandra or Sara at Siskiyou Coast Realty (541) 332-7777.

THE CAT'S MEOW vacation cottage. Great location! Winter rates now in effect! Please call toll free (866) 503-5003 for reservations. Non-smoking.

LAKESHORE VACATION HOME in Port Orford. Lakefront ocean view. Winter rates in effect. Visa or Mastercard accepted. www.staybythesea.com or call 332-0172.

DUPLEX 2 BED, 2 BATH upper unit \$625.00 (209) 576-8853.

ADJOINING OCEAN VIEW LOTS, 90x100 and 110x100, both for \$72,500.00. Ask for Toby #933 Campbell Realty 332-9109 or 1-800-808-4663.

4 ACRES WITH 3 BEDROOM 2 bath home, 2 decks, 3 car garage, private many trees, beautiful. \$179,000.00 ask for Toby #894 Campbell Realty 332-9109 or 1-800-808-4663.

VACATION RENTAL IN TOWN. Cute and clean 2BR, 1BA fully furnished. Day / Week / Month 332-7195.

SERVICES

JUANITA REDDING HENNICK Barber / Hairdresser 332-6791.

KEY'Z LOCKSMITH SERVICE – keys, installations, repairs, locks opened. Auto, home, business. Bonded 332-7404.

JOHN B. HOUSER, Barber-Hairdresser, 553 – 19th Street, Port Orford, 332-2050. Hours Tuesday, Wednesday, Thursday, Friday from 12 to 5.

EXTERIOR PAINTING and Remodel, lots of local references. Decks, additions, window packages, siding, and painting. Quality workmanship. Licensed, bonded and insured and BBB member. CCB# 132941. Call 347-2259. Eugene Hill Construction.

THE GURU IS IN! Here's a computer technology expert who can deliver what you need. Set-up to overhaul, desktop to network, web page to database, tutoring to training, friendly "techie" at your service. Scotty 332-0530.

BLUE SKY TREE SERVICE – Professional stump removal by grinding. No stump too big. Lowest price guaranteed (with accessibility.) Still serving Port Orford area for all your tree-care needs. Free estimates! CCB# 152469. 347-7400.

HANDYMAN: Household repairs, property cleaning, labor, odd jobs, chainsaw work. Have truck and tools. 332-0511.

READY FOR A WEBSITE? JT Dataworks specializes in web design, upgrades, maintenance and training. Reasonable rates. Call Judy at 332-0850 or email jt@jtdataworks.com.

CARPETS DIRTY? Call Sunrise Carpet Cleaning 347-3164.

EMPLOYMENT

HELP WANTED: JANITORIAL Evenings. Must have car, phone, be able to pass drug screen test. Call Joseph's Janitorial 347-1783, leave message.

BOOKKEEPER/ACCOUNTANT. Full charge/full time. General ledger, accounts payable, payroll (13 employees), reconciliations, reports. Start \$9.50 hour plus generous benefits/retirement. For job description and required application, contact Port Orford City Hall, P.O. Box 310, Port Orford, OR 97465; 541-332-3681; FAX 541-332-3830; or email portorfordcityh@haborside.com. Closes Tuesday, January 20th, at 4:30 pm.

LOST & FOUND

FOUND: BINOCULARS Call 332-9310 and describe.

GARAGE SALES

ESTATE SALE of Lynn Borland Fri. 16, Sat. 17. Chest of draw's. China, table & chairs. Car. Man toys. Corner 18th & Idaho 8-? Collectables. Freezers. Bed. 8 track player. Low prices. 332-6765.

INSIDE GARAGE SALE Sat. 8-4 Rain or Shine. 100's of yards of fabric, books, toys, clothes & lots of misc. 677 W. 9th Corner of 9th and Coast Guard.

MISCELLANEOUS

15% OFF January art supply sale Sketch Pads, Oil, Acrylic and Watercolor Paints, Watercolor Paper, etc Easel Sale at BASS Art Supply, 175 Second Street Old Town Bandon Open Daily.

CROISSANT BENELECTS, Low Carb Frittata, Luscious Cinnamon Rolls and Chocolate filled Puff Pastry - Only at Java Casa Coffee House - Next to Paula's Bistro - 7 to 11 AM Monday thru Saturday.

Continued on next page

**REMEMBER
THE CRAZY NORWEGIANS**

11:30am - 7:00pm Tues-Sun
New Orleans
Muffalettas Sandwich
332-8601

Roaring Sea Arts

Studio Gallery

OPEN HOUSE LAST SUNDAY
2:00 to 5:00 OF THE MONTH
VISITORS WELCOME
CALL 332-4444 DONNA ROSELIUS
41687 Hwy. 101 S. Port Orford, Oregon

Dock Tackle & Seafood

Winter Hours: 10 to 5 Thu, Fri, Sat.
Local catch Fish-n-Chips, Clam Chowder
Burgers, Gifts, Fishing Gear, and Bait
Fresh local fish fillets when available.
(541) 332-8985

Classified Ads

Continued from previous page

THE CLASS OF 2005 is sponsoring a bottle/can drive on January 17, 2004! If you want to help our class, call 348-9927 and tell us so we can take your bottles/cans off your hands!

WANTED: "WELLS CARGO" style cargo trailer in reasonably good, towable condition. Call Paula at 332-2145 and/or leave message.

LORD OF THE RINGS Arwen's pendant with chain \$30.00. The one gold ring \$30.00. Ring is silver gold plated pendant is silver. Chains are silver. At Savoy Theater or 332-1282.

FREE RING CLEAN AND POLISH at Jewels By The Sea, 755 Oregon St. #A (Hwy 101). We can also change your watch battery.

DOES YOUR JEWELRY SIT in a box because it needs repair? Bring it to Jewels By The Sea, 755 Oregon St. #A (Hwy 101) for a free repair estimate. We can help make your jewelry wearable again and it may not cost as much as you think.

MEADE 90mm Maksutov-Cassegrain Spotting scope, view finder, prism eyepiece, tripod. Cost \$574, sell for \$325. 332-1050.

50% OFF ALL CALENDARS (excludes pocket tide calendars) at the Shell shack.

HOT COFFEE! Bagels, Cinnamon Rolls, Croissants and Low Carb Frittata - Only at Java Casa Coffee House - Next to Paula's Bistro - 7 to 11 AM Monday Thru Saturday.

Seaweed Natural Grocery & Café

Store Hours: Mon-Sat. 10-6

Café Hours: Mon-Fri. 10-3

832 Hwy 101, Port Orford 332-3640

Pampered Pooches

New Hours

Mon.-Fri. 9:00-3:00

545 W. Tenth St. • 332-0520

FRESH BAKED Croissants, Puff Pastry filled with chocolate, Muffins and much more at Java Casa Coffee House - Next to Paula's Bistro - 7 to 11 AM Monday Thru Saturday.

GREEK FISHERMEN'S HATS, excellent selection of sizes and colors, and the best price around! At the Shell Shack at BattleRock Park.

PACIFIC WAVE FITNESS (541) 332-7777, (541) 332-2025. Now offering Satellite TV. Membership fees \$30.00 per month. 24 hour fitness. Call for free tour of gym. Join now to get in shape!

LORD OF THE RINGS Arwen's pendant with chain \$30.00. The one gold ring \$30.00. Ring is silver gold plated pendant is silver. Chains are silver. At Savoy Theater or 332-1282.

MISTY MEADOWS JAMS and syrups at the Shell Shack at Battle Rock Park, a locally made Oregon product!

CARPET TECH Carpet and Upholstery Cleaning now serves Port Orford. Satisfaction guaranteed or the job is free. All we leave is the clean. 347-2259.

PREPAID PHONE CARDS \$7.00 - 2-hour cards - no minimum usage! The Downtown Fun Zone.

NEW MOVIES THIS WEEK: "Johnny English", "Bring It On Again", "Freddy

THE WOODEN NICKEL

Handcrafted Myrtlewood

Retail - Wholesale

(541) 332-5201

1205 Oregon St.

Port Orford, OR 97465

Colorful Landscape Rock

Available at

Jim's Gems

Hwy 101, 3 miles S. of Bandon

OPEN Fri-Sun 9-6 • (541) 347-7400

vs Jason", "Cutthroat Island", "Between Strangers", "Daddy & Them", "And Now Ladies & Gentlemen", "Lucia Lucia", "Stark Raving Mad", "Swimming Pool", and "Buffalo Soldiers". In our "New Arrivals" section we added "The Hotel New Hampshire." Please remember items are due back by 3:30pm the next business day. The Downtown Fun Zone. Open 9:30-6 Mon-Thurs and 9:30-7 Friday and Saturday. Closed Sundays.

MINISTORAGE/U-HAUL. 200+ storage units, 150+ climate controlled. Airport-U-Stor, across from Ocean Spray 347-4356.

Bird Potluck-Memorial

A memorial will be held for Geraldine "Geri" Bird at the Church of Jesus Christ of Latter-Day Saints Chapel at Twentieth Street and Jackson on Saturday, January 17, at 4:00pm, with an informal potluck following for those who wish to stay.

Many only knew Geri, as the lady at the Port Orford Discount Drug Store, where she worked part time for many years. Geri loved the ten years she lived in the Port Orford area. She loved the people here and made many close relationships!

We wish to invite all Geri's many friends and acquaintances in the Port Orford area. The memorial is a chance to say goodbye for all those whose lives she touched.

Curry Public Transit

Remember: We are here for you

332-5771

Garrison Lake Emptied Continued from Front Cover

through the state park claiming there would be problems with salt water intrusion and keeping the culvert open.

City councilor Jim Auburn asked Newcomb how much it would cost to rebuild the dune and Newcomb responded one half million dollars. Newcomb said the company's computer modeling showed the dune would survive a 10-year storm event and that a 25-year storm event wouldn't cause a total failure. Newcomb said the city could maintain the lake level with a weir device.

County Commissioner Lucie La Bonte said she had attended last Tuesday's lake meeting and that the tribes were concerned with doing anything on the beach because of evidence of 5,000-year-old remnants on Native American culture in that area. La Bonte said she was going to work with the South Coast Watershed Council for a watershed solution to the problem and get fish enhancement money.

In response to where the half a million dollars would come from to pay for a reconstructed dune at Agate Beach city administrator Erna Barnett said the city doesn't have the money and can't take the lead on the project.

The Garrison Lake Study was done under a grant from the United States Department of Commerce, Economic De-

velopment Department at the cost of \$86,000. The study also included a portion devoted to using Garrison Lake as an alternate water supply.

Pete Barrell said on Tuesday morning that Parks will hold a Public Hearing on Wednesday, February 18, at 6:00pm, in the Community Building. The City's 60-day emergency permit to open the lake runs out on February 8 and they have an application in for a long-term permit to open the lake. Barrell said that this meeting is a chance for the public to weigh in and let State Parks know their opinion on breaching or not breaching the lake.

Barrell said that the Agate Beach State Park is the number one issue at State Parks headquarters in Salem. Barrell was enthusiastic about last Tuesday's agency meeting in Port Orford concerning the lake. He said State Parks is looking at an outlet channel through the park. Barrell can be contacted at pete.barrel@state.or.us.

Michael Carrier is the State Parks Director and works at the Salem headquarters. His e-mail address is michael.carrier@state.or.us. I've been told he too would be interested in what people have to say about the lake openings and their disas-

trous effect (my opinion) on the bluffs at the State Park.

Red Hat Society

The end of 2003 left the Red Hat ladies of Port Orford with lots of extra cookies! We had a Holiday Cookie Exchange planned at the home of Denise Welsh, in Ophir, for Dec. 15. That was about THE rainiest, stormiest night we'd had all year, so the roads were almost impassible. Cookies just had to be eaten by their owners!

Up next is an Art-Tea event to be held on Sunday, Jan. 25 at 2 p.m. at the Transaction Gallery. Local Red Hat ladies will display their own artwork, read poetry, do skits, sing songs, or just be the audience. Join us, won't you?

If you're interested in finding out what makes a group of mid-life gals get together to have fun, stop by Micki's On Main and be part of the action. 'ta'ta from the Countess of Scribe

Jubilee Committee Meeting

The Port Orford Fourth of July Jubilee committee meets on Wednesday, January 21, 6:30pm, at Salsa Rita's.

Jarboe's Tractor Service

CAT 216 Skid Steer

CCB # 151608 • Bonded & Insured

Brush Hog "Mower"

4x1 Bucket • Root Grappler
Backhoe • Tracks • Grading

(541) 297-6525

Port & Starboard Restaurant and Lounge

Breakfast Special

Monday-Saturday

7:00 am—10:00 am

Sunday

9:00 am—11:00 am

Lounge open at 7:00 am

Two Eggs
Hash browns
Toast
Coffee

\$2.75

Two Eggs
Hash browns
Two Bacon OR
Two Sausage
Toast
Coffee

\$3.50