

Port Orford Today!

Port Orford's Most Popular Newspaper!

Vol. 14 Number 5

Thursday, January 30, 2003

© 2003 by The Downtown Fun Zone

The Downtown Fun Zone

Evan & Valerie Kramer, Owners
832 Highway 101, P.O. Box 49
Port Orford, OR 97465
(541) 332-6565 (Voice or FAX)

Valerie: valerie@mydfz.com

Evan: evan@mydfz.com

Brenda: .. dellama@harborside.com

Nancy: .. nancyab@harborside.com

Web Site: <http://www.mydfz.com>

FREE



Helping Small Businesses
Prosper

Chamber Hosts Ralph Brown By Evan Kramer



The Chamber of Commerce of Port Orford and North Curry County held their membership meeting on Monday afternoon at the Paradise Café. They first heard from Ed McQuade, a SCORE counselor, who talked about the small business conference he helped organize. SCORE stands for Senior Corps of Retired Executives. The conference will be held on Tuesday, February 25, from 8:30am to 5:00pm at the Docia Sweet Hall at the Event Center on the Beach in Gold Beach. The theme of the conference is "Helping Small Businesses Prosper On America's Wild Rivers Coast" and is open to all interested persons.

The conference agenda includes a 15-minute talk by Ronn Kerr on promoting America's Wild Rivers Coast and a talk by CEDAC director Dean Webb on promoting Curry County. Kerr is president of the Port Orford Chamber and also of the America's Wild Rivers Coast consortium. There will be other talks and panels during the morning session followed by lunch from noon to 1:00pm. From 1:00 to 5:00pm there will be presentations going on in three different

rooms on a variety of topics from Tax Obligations and How to Reduce them to Selling or Buying a Business. Cost for the conference which includes lunch and all workshops is \$20 for pre-registration and \$25 at the door. Ed McQuade said the goal of conference organizers was that every attendee leaves with valuable information to make their business prosper. For more information on the business conference contact McQuade at 332-4003.

Chamber president Ronn Kerr introduced Curry County Commissioner Ralph Brown. He was elected commissioner in November of 2002 and started serving his term of office earlier this month. Brown said he had been in the Maritime Industry for over 30 years. He owns two trawlers, which are based out of the Port of Brookings. Brown, a resident of Brookings, said that had he not been invited to this meeting he was going to invite himself, as he needs better contacts in North Curry County. Brown spoke about his experience working with the Pacific Fisheries Management Council for several years. He said in his opinion not all businesses are the same and that we need to look at focusing on businesses that bring money into the community. Brown said this area has lost its natural resources businesses over the years. He said the real change oc-

curred because of an increase in the efficiency of timber mills, not because of the spotted owl. He said wood production is now concentrated on the I-5 corridor where the workforce is located. Brown spoke about the importance of infrastructure and questioned whether we have places to put businesses in.

Brown said that natural resources would continue to be important and emphasized the importance of value added products. He used an example of a Japanese factory he has visited which bought raw logs and turned them into furniture.

Brown said he liked the idea of America's Wild Rivers Coast. He said he had done some study on traffic counts on area roads including 42, 38, 299, 199 and 101 and that the counts have been flat for the past ten years. Brown said we could use more people coming here and then find a way to get them to stop.

Ed Dowdy told Brown about an example of value added products with Oregon Overseas Timber in Bandon which mills


Continued on Back Cover

NOTICE!

There will be no paper on Thursday, Feb. 6. We will resume publication on our normal schedule the following week.

R. AuFranc
LAWYER

*"COMMON SENSE ADVICE &
LEGAL SERVICES"*



WILLS
TRUSTS
PROBATES
BUSINESS
REAL ESTATE

HWY 101 @ 9th St.
332-2102
also inactive CPA

SOUTHPORT
FOREST PRODUCTS

Buying delivered conifer
small saw log sort
& conifer pulp logs

Forrest Flowers
Log Buyer
541-266-0903
541-266-0824 fax
Cel. 541-530-5482
Home 541-332-4385



Excel Accounting Services
Lyndell Hauschildt, L.T.C.
94120 Moore St.
P.O. Box 123
Gold Beach, OR 97444
(541) 247-6560
Fax (541) 247-3442

Tide Predictions For Port Orford - 42° 44.735 N 124° 30.832 W

Produced by "Tides & Currents for Windows" version 2.0 by Nautical Software (503) 579-1414

Sun	Moon												
Date	Time	Tide	Time	Tide	Time	Tide	Rise	Set	Rise	Set	Phase		
Thu Jan 30, 2003	3:42a	4.0	9:39a	8.4	4:54p	-1.1	11:43p	6.5	7:32a	5:29p	7:12a	3:49p	
Fri Jan 31, 2003	4:36a	3.8	10:29a	8.4	5:37p	-1.1			7:31a	5:30p	7:53a	4:58p	
Sat Feb 1, 2003	12:21a	6.7	5:24a	3.5	11:15a	8.3	6:16p	-0.9	7:30a	5:32p	8:27a	6:03p	NM
Sun Feb 2, 2003	12:57a	6.8	6:10a	3.3	11:59a	8.1	6:52p	-0.6	7:29a	5:33p	8:54a	7:07p	
Mon Feb 3, 2003	1:31a	6.9	6:53a	3.1	12:41p	7.7	7:26p	-0.2	7:28a	5:34p	9:18a	8:09p	
Tue Feb 4, 2003	2:03a	6.9	7:36a	3.0	1:22p	7.2	7:59p	0.4	7:27a	5:36p	9:39a	9:10p	
Wed Feb 5, 2003	2:35a	6.9	8:21a	2.8	2:05p	6.6	8:30p	1.1	7:26a	5:37p	9:59a	10:08p	
Thu Feb 6, 2003	3:06a	6.9	9:10a	2.7	2:52p	6.0	9:01p	1.8	7:25a	5:38p	10:18a	11:06p	

**Boathouse Building Begins
By Evan Kramer**

Construction began on the boathouse at Port Orford Heads State Park on a damp Monday morning. The boathouse will be the new home of the 1940's era Coast Guard Lifesaving Boat #36498, which has been sitting on the property unprotected since early 2000. State Parks employee Mike Collins explained the project on Monday afternoon. Collins official title is "Historical Properties Specialist". Construction work on Monday was mainly taken up with removal of the trees to make way for the boathouse. A large spruce tree and pine tree had previously been taken down but not removed. In addition a fir tree and a small spruce tree were taken down to make way for the boathouse.

Collins said the boathouse dimensions would be 28 feet wide by 44 feet wide. He said it would have a hip roof with wood shingles and be open on three

sides. The side facing the parking lot will be enclosed and include windows openings but not windows. This side will replicate the design of the original boathouse in Nellie's Cove. The boat-house will be 15 feet high inside and 21 feet to the highest point on the roof. The building will include a wood floor where the cradle will be placed which the boat will sit on.

Collins said the money to build the boat-house is coming out of the local state parks wood fund and totals around \$26,000. This money is raised through the sale of firewood to visitors at the state parks campgrounds. State parks employees will do most of the construction work except for some of the tree removal and excavation, which is being handled by Dave Ellingson Construction. West Coast Contractors, which will bring in a large crane for the job, will move the boat from its current parking space to the boathouse. The aluminum cradle for the

boat was built by state prison inmates and paid for with lottery funds. It is currently at the state park. A private archaeologist was on site on Tuesday all day as the excavation work was done and he found nothing which would stop the construction.

Collins talked about a few of the other projects scheduled for this summer at the Port Orford Heads State Park. A contractor has been hired to remove the lead paint from the Port Orford Lifeboat Station Museum housed in the former Coast Guard barracks building and the garage buildings. Collins estimated the cost of the lead abatement at \$60,000. He said the Lifeboat Station Museum was also scheduled to receive new shingles for the roof at a cost in the mid thirty thousand dollars.

Collins said his goal was to have construction of the boathouse completed by Spring break.

Meet your friends at the

WHEELHOUSE RESTAURANT

For Breakfast, Lunch or Dinner

Our speciality - FRESH FISH

To Go orders are welcome - 332-1605

Open daily 7:00 am - 9:00 pm

Hwy 101, Battle Rock Park, Port Orford, OR



January Port Meeting By Jane Cramer

The commissioners of the Port of Port Orford started the New Year off on a positive note at the regular meeting of the Port of Port Orford on Tuesday, January 21 as they worked through a full agenda. New Port Manager, Gary Anderson, and new Commissioner, Evan Kramer, joined Commissioners Barnes, Hall, Knapp and Welch as they tackled some of the numerous problems facing the Port.

Three positions on the Commission will be filled at the next election on May 20. Positions 3 is a partial term ending 06/05, while Positions 4 & 5 are full terms ending 06/07. Residents of the Port District are encouraged to file for one of the three positions. Persons interested in running for the position may file between February 8 and March 20. There is a \$10 filing fee or you can get forms from the elections office and gather signatures. If you are interested in running, contact the elections office for further information.

Unlisted agenda items included information from Commissioner Kramer on Jay Stoler's offer to update the Port web-

site without charge. The Commissioners voted unanimously to accept the offer.

Another unanimous vote approved David Knapp's suggestion that a letter of thanks be written to Richard Mijs thanking him for his fine work as Interim Manager.

Under Old Business the Commissioners worked through a first review of Ordinances that had been studied during the workshop on January 3. The only actions taken were on fees, which are policy matters rather than part of the Ordinances. Gifford Barnes moved that the fees for the Boneyard be dropped to \$50 per month plus a \$15 lifting fee for each time the boat is hoisted. The motion passed unanimously after Evan Kramer's second. Gifford Barnes then moved that a \$10 seniority fee be charged to hold a space for boats leaving. The motion passed unanimously after being seconded by Evan Kramer.

Commissioners discussed a proposal by Klamath Bank to provide payroll services for the Port. Gary Anderson stated that the Port has the software to handle payroll. The consensus of the Commissioners was for the Port to continue as before.

Howard S. Lichtig Attorney at Law

**Bankruptcy
Injuries / Accidents
Criminal Defense
Probate / Conservators
332 - 6060**

Hwy 101 (264A W. 6th St.) Port Orford, OR

President Hall appointed a committee of Commissioners Barnes and Kramer, Manager Anderson and Ron Sperling to inventory and organize contents of the upper shed to find out what the Port owns and what could be sold.

Under New Business Gary Anderson advised that he will get prices from hydraulics outfits for quarterly crane inspections and a filter and bring the information to the next meeting.

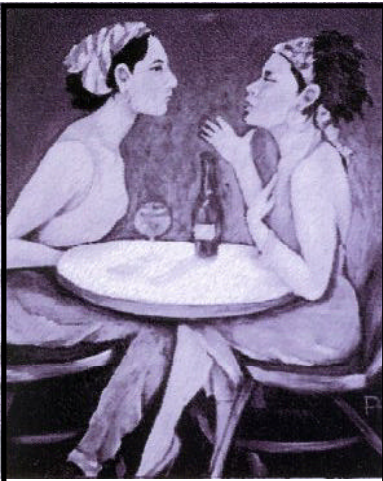
The Commissioners agreed the manager should discontinue the Sanican service for a savings of \$75 per month.

The Manager's Report advised of a meeting between representatives of the Port and OEDD on January 28 and a public meeting at 12:30 on January 29 with the Corps of Engineers on wintertime dredging.

Comments from the Commissioners on the new format of the financial reports reflected their satisfaction with the readability of the reports and the information provided. Discussion centered on priorities for getting the past due bills paid and implementation of cost cutting measures.

David Knapp moved to authorize Gary to pay bills and the motion passed unanimously after being seconded by George Welch.

The meeting was adjourned at 8:15pm.



Paula's Bistro

236 Hwy. 101, Port Orford
Open Wed-Sun 5-9 call 332-9378

Great cuisine, cocktails and wine list
Family game room and much more. . .

Police Log

January 13, 9:00am: found woman's wallet – owner contacted.

January 14, 6:20pm: Alarm at Driftwood set off accidentally – checked okay.

9:15pm: 911 hang-up call from Shoreline Motel – phone line trouble.

January 15, 10:30am: Report of stolen vehicle out of Reedsport allegedly in

"For all your home and construction needs"



PRICED RIGHT EVERY DAY!

8 a.m. - 5:30 p.m. Mon. • Fri.
9 a.m. - 4 p.m. Sat.

1120 Fillmore — Entrance at 11th & Elmira •347-2662

Red Cedar Pac Deck

Radius Edge →

↑ Kerfed Back

2" x 6" x 8'	• \$8.83
2" x 6" x 10'	• \$10.47
2" x 6" x 12'	• \$12.50
2" x 6" x 14'	• \$14.58
2" x 6" x 16'	• \$16.66
2" x 6" x 18'	• \$18.89

Port Orford – search conducted, unable to locate.

8:00pm: Report of theft from residence on Port Orford Loop – report taken, under investigation.

January 16, 10:00am: Disturbance at Chevron Station – domestic, handled by contact.

6:00pm: Complaint of harassment on Thirteenth St. – civil matter, referred to District Attorney's Office.

January 17, 4:51pm: Alarm at Driftwood Elementary – employee error, checked okay.

9:04pm: Welfare check on tenant at Battle Rock Motel, possible assault victim – unfounded.

9:50pm: Report of domestic disturbance, Brett Dennis Webb, 34, Port Orford arrested for Assault IV – transported and lodged at Curry County Jail.

January 18, 12:30am: Assist other agency, Curry County Sheriff Office with outstanding warrants on Arthur Lee Forbes, of North Bend – arrested and transported to Curry County Jail.

8:12pm: Responded to 911 call for man with gun at Sixth St. address – suspect gone on arrival – report taken, under investigation.

January 21, 11:00am: Report of Criminal Mischief to American Legion Hall and Community Building – report taken, under investigation.

January 23, 9:40am: 911 hang-up call from Jackson St. address – verbal argument, handled by contact.

10:30am: Report of assault – parties contacted, report taken.

January 25, 6:54pm: Tammy Michelle Bradford, 37, arrested on a warrant out of Polk County – transported and lodged at Curry County Jail.

Safety Tip of the Week

Stop the Violence! If you're a victim of domestic violence, there is help. Call the OASIS Shelter at 1-800-447-1167 or the National Domestic Violence hotline at 1-800-799-7233, and of course 911.

Partial Election Results

State measure 28, "Temporary Income Tax", was defeated. In Curry County 5,843 (64.92%) voted no and 3,157 (35.08%) voted yes with a 65% turnout.

Sea Breeze Florist

Valentine's Day is coming soon!

Chocolates

Flowers

Balloons

Gifts

World Wide Wire Service

(541) 332-0445 Shop
888-484-2234 (toll free)

311 6th St.
Port Orford

Sean Pepper Plumbing

Commercial • Residential

CCB # 151800



541-347-4954

Cell: 297-7623

Fishermen's Meeting

Port Orford Fisheries Community-Based Management Advisory Board will meet on Wednesday, February 5, 6-8pm at the Community Building to discuss the next step in their GIS mapping project. Geographic Information Systems (GIS) is a computer system that records, stores, and analyzes information about the features that make up the earth.

"GIS is a powerful communication tool that can provide a common frame of reference for a shared environment," notes Vicki Wedell, Oregon State University Masters Candidate in Marine Resource Management. "In this case the geographic environment we are studying is Port Orford Ocean Resources. Using GIS we will layer information about ODFW fish and urchin surveys, ocean bottom bathymetry, bird surveys, even submerged shipwrecks onto a map of the Port Orford ocean region."



Savoy Theatre

811 Hwy 101, Port Orford, OR
541-332-3105 voice, 332-8105 FAX
savoy@harborside.com

GANGS OF NEW YORK

Rated R • 166 min. • Starring Leonardo DiCaprio, Daniel Day Lewis

FRIDAY 7 pm

SAT & SUN 3 & 7 pm

MON - THURS 7 pm

Monday Night is Discount Night

"We are building a map of the ocean region that Port Orford fishermen can use to determine sustainable fisheries for Port Orford," said Leesa Cobb, Communication Coordinator for the group. "This information can be used to lobby fishery managers for rationale management of the local fisheries. An example we use is that a 2000 lingcod stock assessment survey done off of Washington indicated a decline in lingcod stocks that resulted in major reductions in fishing opportunity for lingcod on the West Coast. We don't believe a survey in Washington is useful for managing Port Orford fisheries."

At this meeting fishermen will get an overview of GIS mapping and talk about the upcoming survey for the project. "Pizza dinner will be served at 5:45 and we'll start the meeting at 6:00 so this can be a working dinner." Said Cobb. The public is invited to join us.

Library Meetings

The Port Orford Library Foundation meets on Tuesday, February 11, 2:30pm, in the city hall council chambers.

The Port Orford Library Board meets on Wednesday, February 12, 5:15pm, in the library.

**See our Flyer in this Paper
Sale Starts Feb. 1 and runs thru Feb. 10**

Coos Curry Supply

1009 Highway 101, Port Orford, OR 97465
(541) 332-1818

Mon-Fri 8m-5pm
Sat.9am-Noon

Wild Horse Salon

**Complete Hair Care
& Products**

Michelle Wagner

14th & Idaho

332-0367



You won't find one of
these at Chetco
Federal Credit Union.

*Become a member of Chetco Federal Credit Union.
Our accounts and services are great—
and you'll recognize who serves you!*

CFCU

Chetco Federal Credit Union

Everything we do,
we do for **you**™

Branches: Harbor, Brookings, Gold Beach, Port Orford, Crescent City, Smith River

Arts & Artists By Jean Kilburn

After the December hiatus, the monthly POAC meeting with a lengthy agenda was held January 22 at the Community Building with an excellent attendance.

Elaine Roemen recently held the first organizational meeting of persons in charge of various committees for the summer Student Targeted Arts & Music Program (STAMP), which was discussed at length at the POAC general meeting. A schedule with a registration form will be published in May. More and varied courses will be offered to both children and adults for the 2003 STAMP program. Artists, musicians and dance instructors who wish to participate are encouraged to contact Elaine Roemen at 332-0688 or Susan Lincoln at 332-1040.

The summer STAMP program is able to offer new and expanded classes for the 2003 since POAC has been awarded a grant for \$4,760. from the Oregon Arts Commission.

The Oregon Arts Commission's goals are to increase art awareness and appreciation, and build community pride in local artistic heritage. The POAC grant

will be used to support artist fees, art supplies and transportation to classes. POAC is grateful to the Oregon Arts Commission for selecting us as one of the projects considered for the grant.

The following is a partial schedule for Women's International History Month:

March 2 Community Building 2:00 p.m.
Ruth Krachtovil's Monolog about Abigail Scott Duniway, who was mainly responsible for the women's vote. Readings by local women writers honoring Women's International History Month follows the monolog.

March 9 Community Building 3:00 p.m.,
a Chautauqua presentation by Susan Butruille entitled "Westward I Go Free: Women and Freedom in the Frontier West."

March 14 Transaction Gallery 6:30 to 8:30 p.m. Chamber of Commerce & POAC Mixer where 'Chairs' decorated by local artists will be on display and silent auction bids will be accepted.

March 23 Community Building 2:00 p.m.
"Chair-A-Tea" Fashion Show and Tea Party. Fashions from Micki's on Main, Georganne White and Donna Roselius

**Brighten up a Rainy Day
at
Salsa Rita's**

812 Oregon St.

**ToGo's Welcome
332-7482 (RITA)**

**Open Tues - Sat.
11:30 - 8:00 p.m.**

**Check on our Daily Special
Good Food / Good Prices**

will be modeled. 'Chairs' decorated by local artists will be auctioned after the fashion show.

March 30 Community Building 3:00 p.m.
a Chautauqua presentation by Jeni Foster, entitled "Mother Jones: The Miner's Angel".

The first publication of "A Dozen Pens" by the Port Orford Writers' Roundtable was successfully sold out before Christmas. However, a second opportunity to purchase "A Dozen Pens" is available by placing an order with Weld Champneys at 332-8882.

POAC is delighted to announce that Josette 'Jodi' Bulaich, professional web site designer, has volunteered to become our web master. We will now have important updates, a calendar of events, general council and Board minutes, articles, announcements and up-to-date pictures of events located at www.portorfordarts.org.

Q: What product causes the most trouble in a lumber yard?

A: The naughty pine

Currydale Farms



Real Estate

currydale@harborside.com

Sheepskin Specialties

Langlois — 348-2500

Farm Mart

farmstore@harborside.com

Fencing • Feed

Culvert • Gates

Animal Husbandry Supplies

Across from Ocean Spray

347-4356

www.currydale.com

Bargain
Of The Month

62 qt. hinged lid

Storage
Crate

\$4.⁹⁹

McNair True Value Hardware

Help is just around the corner
1935 N. Oregon St., Port Orford
(541) 332-3371

Bartlett's Cafe

Bring a Friend

**Buy one delicious meal at
regular price, get a second
meal of equal or less value
for Half Price!**

**You must present this coupon.
Valid Jan. 9 thru Feb. 5, 2003**

Open 7am to 7pm Every Day

Located across Hwy 101 from
The Downtown Fun Zone
in Port Orford

Letter to the Editor,

Twice in the past week I've read some interesting material concerning the Port Orford Harbor and the effects on it of the breakwater.

I bought a beautiful 2003 calendar titled "Footnotes and Footprints", on which every other page has a fine photo of a location in Port Orford, accompanied by an explanatory text of its history. For April there's a photo of the Dock. Part of the text says, "In 1890, the people of Port Orford were hopeful the government would build a breakwater to protect the dock from strong winter storms. On November 28 of that year, the Gold Beach Gazette reported, "Port Orford harbor is now one of the best on the Pacific Coast for about nine months of the year, and that with the proposed improvement, or even a part of it, it will be one of the finest deep water harbors in the world. The largest ship that floats can lay and load at Port Orford, as it is, at all times except during a southerly gale, and at such times, all the bar harbors on the coast are shut off with heavy seas."

Yesterday we received the January issue of the Point Orford Heritage Society

News. In it are quotes from the Port Orford Tribune of November 1923 which reports of a 9300-ton vessel, the Frogner, 440 ft. long, 60 ft beam and drawing 28 ft. of water, docking twice to load cargoes of lumber. The Officers of the Frogner ...opined "that with the addition of a small breakwater and more moorings this would be a splendid all year harbor. The Pilot of the vessel said "that a small break-water running southwesterly from the outermost northerly point would make Port Orford harbor second to none on the coast."

In Patrick Masterson's book, "Port Orford-A History", copyright 1994, I read on page 181, "In the mid-1960's, the Corps of Engineers designed and constructed a jetty to protect the dock. At first, the project was hailed by all as a wonderful improvement, but it didn't take long to recognize that its design was to have an adverse effect on the water depth at the dock. The entire area...filled with sand as the jetty, while taking pressure off the dock from westerly and southwesterly surge, was restricting the natural ebb and flow or wave action that heretofore had maintained a constant depth of water at the dock site." If this

interests you, there is a copy the book is at the Port Orford Public Library, or they are for sale at several places in town.

Considering the continuing problems at the Port Orford Dock I suppose this can be seen as a cautionary tale of "High Hopes" and "Unintended Consequences". We can fool with Mother Nature, but she really is bigger and stronger and if she doesn't like what we do, we probably won't like what she does in return.

I'd be interested in any additional thoughts or information any of you may have on the subject.

Elaine Hamilton

[The part of this letter exceeding our word limit of 250 words has been paid for. - Editor]

Dr. Bill Hoewing

Dr. Bill Hoewing, former Sixes resident, passed away at 3:45am January 24, 2003 in Gordon, Nebraska, where he resided. He had been ill with cancer, which was diagnosed just one month ago.

REAL ESTATE & RENTALS

RENTAL PROPERTIES Available. Please check our new website to view what's available: www.bandonrentals.com. Or call Oregon Properties Property Management at: 541-347-1876 (office); 541-5307190 (mobile).

VACATION HOME RENTAL. Step back in time for a cozy, relaxing vacation in a 1920's home with history. Details at www.thejoanofarc.com or www.vacationhomes.com. 541-332-0516.

CURIOS about what your property may sell for? Call Siskiyou Coast Realty. Info is free. 332-7777.

FORRENT: Trailer and RV spaces available 180.00 per month includes water sewer and cable. Monthly rental only. Call 541-332-8265.

TRAILER FOR RENT \$250.00/mo. 332-5605 message, 1-541-671-9839 Cell Phone.

TOTALLY REMODELED spacious 2 bedroom with separate study, large family room, 2 bathrooms, fireplace, elegant master suite, basement, lake access, includes washer/dryer \$650 month, first plus security deposit. No pets, no smoking. 332-5044.

RELOCATING? 3 bedroom Vacation home is available for monthly rental January thru March. Fully furnished. \$860.00 plus utilities. 541-332-0516

2 BEDROOM LAKE FRONT panoramic view of lake and ocean. \$550.00 per month. 332-1435.

FOR RENT: 1 ACRE PASTURE fenced and cross fenced. Close to town. Rent depends on animals. 332-1503.

FOR RENT 36' MOTORHOME on property. Secluded but close to town. Excellent condition. 1st, last, dep. Must have references. \$300.00 month. Water, sewer, electricity included. 332-1503.

HOUSE FOR RENT. One master bedroom overlooking the lake. Two bathrooms. Has major appliances. \$600 month plus deposit. Leave message at 332-1715.

TRAILER FOR RENT \$250.00/mo. Or for sale. Will consider rent with lease option to buy. 332-5605 message, 1-541-671-9839 cell phone.

SERVICES

JUANITA REDDING HENNICK Barber / Hairdresser 332-6791.

COUNSELING for individuals, couples & families. Ernest Thayer, counselor for 20 years, maintains a practice in Port Orford & Ashland. All issues including relationships, parenting, depression & abuse. Sliding fee scale (sorry no insurance). Call Ernie at 332-3210.

JOHN B. HOUSER, Barber-Hairdresser, 553 - 19th Street, Port Orford, 332-2050. Hours Tuesday, Wednesday, Thursday, Friday from 10 to 5. Closed Saturday.

INTERIOR EXTERIOR DESIGN and Remodel, lots of local references. Quality workmanship. Licensed, bonded and insured and BBB member. CCB# 132941. Call 347-2259. Eugene Hill Construction.

KEY'Z LOCKSMITH SERVICE - keys, installations, repairs, locks opened. Auto, home, business. Bonded 332-7404.

THE GURU IS IN! Here's a computer technology expert who can deliver what you need. Set-up to overhaul, desktop to network, web page to database, tutoring to training, friendly "techie" at your service. Scotty 332-0530.

IT'S TIME TO GET IN SHAPE at Pacific Wave Fitness located on 101 across from Circle-K. Gift certificates available. Call 332-2025 or 332-7777 for more information and a tour.

HOME DESIGN LANDSCAPE Plans - Building permits for homes, shops, decks - Then get bids - Call George McHair licensed landscape architect 347-3817 - Quality starts with design ideas.

FRIENDLY WOMAN will do cooking, cleaning, gardening, shopping, driving to activities with your car. Reasonable rate. Experienced. Good references. Call Lauren at 332-0229.

MISCELLANEOUS

RADIO SHACK VHF/UHF/FM Antenna with 160-inch dual boom, never used, just tested, paid \$100, asking \$50. Call 541-332-8930.

1991 CHRYSLER NEW YORKER 4-door sedan, V6 motor, auto trans, very clean inside & out. No rust or dings. Air, tilt wheel, cruise, 27 m.p.g., looks and runs very good. \$1750.00. 332-4500.

FREE BAR. U-HAUL. 332-1211.

Continued on next page

Remember
The Crazy Norwegians
Check out our Sunday night special
332-8601

Roaring Sea Arts
Studio Gallery
OPEN HOUSE LAST SUNDAY
2:00 to 5:00 OF THE MONTH
VISITORS WELCOME
CALL 332-4444 DONNA ROSELIUS
41687 Hwy. 101 S. Port Orford, Oregon

Dock Tackle & Seafood
Open all through winter
Hours 8 to 5, Open Thurs., Fri., & Sat.
Local catch Fish-n-Chips, Burgers, Gifts,
Fishing Gear, and Bait
Fresh local fish fillets when available.
(541) 332-8985

Classified Ads

Continued from previous page

WANTED: STAIR MASTER and Stationary Bike. Call Sandra 332-7777 or Kelsey 332-2025.

VALENTINE'S WREATH Workshop. Marsh Haven Farm. Feb. 8 or 9, 12:00-3:00pm. All materials provided. RSVP 348-2564. \$25 per person.

CARPET CLEANING, expert service, fast dry time, best prices guaranteed. Michael 541-251-0411 anytime!

ALLEN FOLDING LOOM \$150.00 firm. 332-8000 evenings after 6:00pm or leave message.

FOR SALE: FIREWOOD 332-9031.

CATCH ME IF YOU CAN! The Shell Shack will be open random days and hours during the month of February. Sorry for the inconvenience, Paula.

RV AWNINGS (new/used) Big selection of quality rebuilt RV Awnings and screen rooms. Can deliver or install at your campsite. Big selection of NEW RV Window awnings most sizes \$99 each. These awnings work great on patios and decks also. Best prices guaranteed. We buy old RV Awnings and parts too. Repairing old RV Awnings our specialty. Gold Beach 247-8279.

LIVE DUNGENESS CRAB now available thru the winter. Call 332-2245.

CARPET TECH Carpet and Upholstery Cleaning now serves Port Orford. Satisfaction guaranteed or the job is free. All we leave is the clean. 347-2259.

SPECIAL 2001 AUDIT REPORT meeting: There will be a meeting of the Coos Curry Electric Cooperative Board and members on February 3 (Monday) at 10:00am at their Port Orford Offices. The purpose of this meeting is to receive an interim audit report from Kenneth Kuns, C.P.A. (Ken Kuns & Company, Salem, Oregon). Mr. Kuns will be addressing the 2001 unfinished Audit Report and its audited financial information that was due to be completed and received by the board at its April 2002 meeting. Mr. Kuns will be discussing the reasons for this delay. (Note: the Bylaws of the Coop requires that Audited Financial Statements be given to the Board each year in April regarding the previous year's financial dealings.) Please attend. There are problems that need solutions.

NEW VIDEOS: "Master of Disguise", "Serving Sara", "The Banger Sisters", "The Foreigner", "King of Texas", "13 Conversations About One Thing", "Cherish", "Due East", "Juwanna Mann (VHS)", "My Wife is an Actress", "Enigma", "I'm The One That I Want (Margaret Cho)", "Pete's Meteor (VHS)". Please remember items are due back by 3:30pm the next business day. For videotapes, DVD's, Sony Playstation, or Nintendo games come on down to The Downtown Fun Zone. Open 9:30-6 Mon-Thurs and 9:30-7 Friday and Saturday. Closed Sundays.

MINI STORAGE/U-HAUL. 200+ storage units, 150+ climate controlled. Airport-U-Stor, across from Ocean Spray 347-4356.

Senior News

By Mary Yoder

January 23 Rotary luncheon – volunteers working head cook Betty Berger, Dolores Care, Juanita Hennick, and Arlyne Mossholder – setting up the dining room Arlyne Mossholder. Now take a look at this – doing dishes, clean up and so forth Mark Murray, Warren Jewell, Jerry Lenhart. Wasn't that great? I think so. A very nice luncheon – two kinds of dessert.

January 25 luncheon and rummage sale. Volunteers working head cook Mark Murray, Geri Sutton, Arlyne Mossholder, Rosalie Coble, Keith Pace, Alicia Benevediz, and Karen Pace at the monkeybox. Kay Neal rummage sale. The luncheon was very nice – enjoyed by all. There was also dessert, three kinds of pie, one was mincemeat. That's what I picked. Everyone enjoyed and had a nice time.

January 28 was membership meeting – will tell about it next.

Tuesday, Wednesday, and Thursday walking group at 8:30am. Want someone to walk with come to the center. All are welcome. Every Tuesday morning is blood pressure.

Every Wednesday is quilting class at 9:30am. Monday, Wednesday and Thursday is the bus from 9:30am to 1:30pm. Need a ride, call 332-5771 and Jerry will be there to take you where you need to go.

Ridicule is like the blow of a fist.
Wit like the prick of a needle.
Irony like the sting of a thorn.
And humor is the plaster
Which heals all these wounds.

Seaweed Natural Grocery & Cafe

Store Hours M-S: 10-6, Cafe 10-3
832 Hwy 101, Port Orford
(541) 332-3640

THE WOODEN NICKEL Handcrafted Myrtlewood

Retail - Wholesale
(541) 332-5201
1205 Oregon St.
Port Orford, OR 97465

Curry Public Transit

Remember: We are
here for you

332-5771

Chamber Hosts Ralph Brown Continued from Front Cover

dimensional lumber for finished wood products.

Chuck Schaumburg told Brown this area of Curry County is in a different zone than the rest of the county. He said we have different newspapers and cable company and that we are more in the zone of influence of Roseburg and Coos Bay rather than Medford and California. He asked Brown to keep us in mind for those unique features. Ronn Kerr said the Internet is becoming the big equalizer and asked Brown for help in getting this area bigger bandwidth. Bob Elligot said the area needs a propane distributor and another market. He talked about the problem in getting some companies to deliver in Port Orford. Brown reminded the group of the need to improve the infrastructure. Jim Auburn said Internet connectivity was important to Port Orford. Bob Elligot asked if there was any

money for point of presence fiber optic hook-ups.

Brown spoke about the Curry County Economic Plan as well as a possible cooperative web site for art products. Bill Dooley from Curry Public Transit said they were developing lots of product shipment between North Bend-Coos Bay and Curry County.

Brown's attendance and talk at the meeting was appreciated and he expressed interest in making many more trips back to Port Orford.

Health Care Discussion

Do residents of Curry County have access to health care when they need it? Do they have adequate insurance or income to pay for it? Do transportation or age present barriers to receiving services? Are people finding they have to travel outside the county for care?

Obtaining answers to these questions motivated the Curry County League of Women Voters to develop an anonymous questionnaire to record information from every census category age group in every part of Curry County. The survey and methodology were developed with the assistance of Oregon Health Sciences University.

Readers may have noticed articles the past two weeks inviting them to meetings of their age group. Any resident is urged to look for articles in this and future papers on how to participate.

League members decided that getting this information is one of the most pressing needs in our county. They will use conclusions resulting from the analysis of the data to speak and act to improve the health care system in Curry County. They expect to produce position papers and hold public meetings as well as speaking to existing health care providers.



Valentine's Day Values

Save up to 20% off Fine Jewelry • 15% off Black Hills Gold
15% off Sterling & Beaded Jewelry • 10% off Beads and Supplies
10% off Gift Items • Gift Certificates Available



Toe Rings
Aquatic Theme &
Two Tone

Sale continues thru February 14th

Jewels By The Sea

755 Oregon St. #A (Hwy 101)
Port Orford, OR 97465
(541) 332-4061

"Heart" Jewelry
Locket, Pendants,
Earrings



"Remember Your Sweetheart!"

